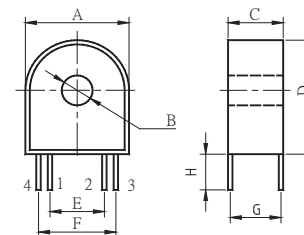



# Thousand Hundred Industrial Co., Ltd.

## DC-Immune Current Transformers 50/60Hz



### Electrical Characteristic

### MECHANICAL DIMENSION

* Part Number	Primary Current range			Error Tolerances		Values at output			Dimensions (mm/inch)								DWG No.	SPEC Download/Link
	I <sub>R</sub> (A)	I <sub>max</sub> (A)	I <sub>max</sub> (A)	δ ( ' )	f (%)	R <sub>L</sub> (Ω)	DCR (Ω)	V <sub>out</sub> (V)	A	B	C	D	E	F	G	H		
CT101250CP	20	40	20	<0.5°	0.50%	37.50	155	0.3	<u>23.5</u> 0.925	<u>7</u> 0.276	<u>11</u> 0.433	<u>25</u> 0.984	<u>15.2</u> 0.598	<u>19</u> 0.748	<u>9.5</u> 0.374	<u>6.0</u> 0.236		<a href="#">CT101250CP08</a>
CT102250CP	40	80	40	<0.5°	0.10%	18.8	230	0.3	<u>26</u> 1.024	<u>8.9</u> 0.350	<u>17</u> 0.669	<u>28</u> 1.102	<u>15</u> 0.591	<u>19.1</u> 0.752	<u>15.5</u> 0.610	<u>6.0</u> 0.236		<a href="#">CT102250CP04</a>
CT105250CP	60	100	60	<0.5°	0.10%	12.5	220	0.3	<u>31.5</u> 1.240	<u>9.5</u> 0.374	<u>14.2</u> 0.559	<u>31</u> 1.220	<u>20</u> 0.787	<u>24</u> 0.945	<u>10.3</u> 0.406	<u>6.0</u> 0.236		<a href="#">CT105250CP05</a>
CT103250CP	80	150	100	<0.5°	0.10%	10	130	0.32	<u>37.5</u> 1.476	<u>13.0</u> 0.512	<u>14</u> 0.551	<u>39</u> 1.535	<u>25.3</u> 1.000	<u>33</u> 1.299	<u>13</u> 0.512	<u>6.0</u> 0.236		<a href="#">CT103250CP06</a>
CT103250CP	100	120	100	<0.5°	0.10%	7.5	130	0.3	<u>37.5</u> 1.476	<u>13</u> 0.512	<u>14</u> 0.551	<u>39</u> 1.535	<u>25.3</u> 1.000	<u>33</u> 1.299	<u>13</u> 0.512	<u>6.0</u> 0.236		<a href="#">CT103250CP05</a>
CT103250CP	120	144	127	<0.5°	0.50%	6.5	130	0.3	<u>37.5</u> 1.476	<u>13</u> 0.512	<u>14</u> 0.551	<u>39</u> 1.535	<u>25.3</u> 1.000	<u>33</u> 1.299	<u>13</u> 0.512	<u>6.0</u> 0.236		<a href="#">CT103250CP07</a>

Frequency Range :50/60 Hz

Operating Temperature Range:-40°C to +85°C

Storage Temperature Range:-45°C to +90°C

Hi -POT: 4000VRMS/1min between windings.

This product for direct connection with DC-Immune in accordance with IEC 61036.

- Definition:
1. f(%) : Ratio error.
  2. δ ( ' ) : Phase shift.
  3. I<sub>R</sub> : Input current.
  4. V<sub>out</sub> : Output Voltage.
  5. R<sub>L</sub> : Loaded Resistance.
  6. DCR : Secondary Winding DC Resistance.
  7. I<sub>max</sub> : Max. detecting current which remains lineality.
  8. I<sub>max</sub> : Max. half rectified DC amplitude w/o saturation for class-1-counters IEC 61036.IE., f(I<sub>max</sub>)<3%

DC-Immune Current Transformer Nomination

**CT 10 1 250 C P**

CT =>The Current Transformer

10 =>The shape of refered 10

1 =>The size of refered 1

250 =>N<sub>s</sub>: Turns=digit shown\*10 (N<sub>p</sub> :N<sub>s</sub> :1:2500ts)

C =>The Material Of Core

P => P(PINs ), L ( Lead Wires )



E318452



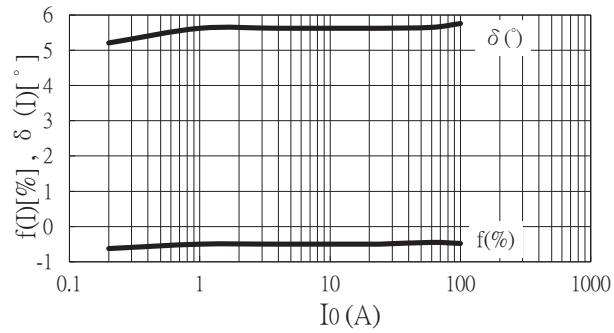
RoHS COMPLIANT

## Application

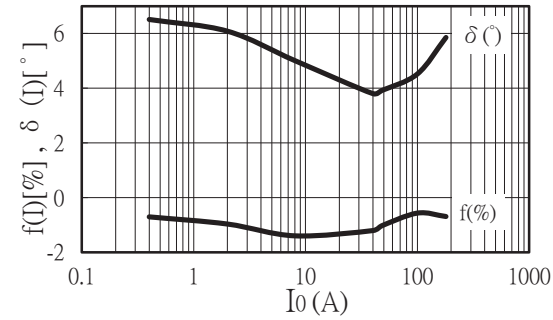
Energy meter(kilowatt per hour).

Typical characteristics for Ratio error and Phase shift at room temperature

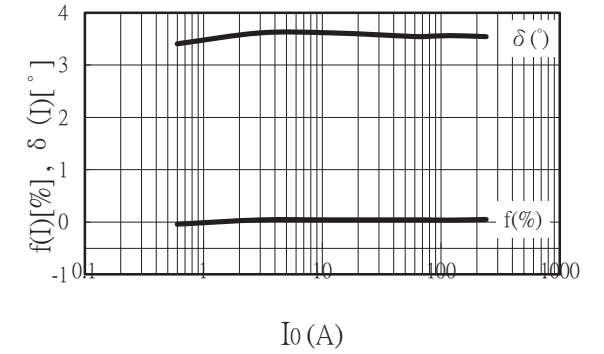
20A CT101250CP01



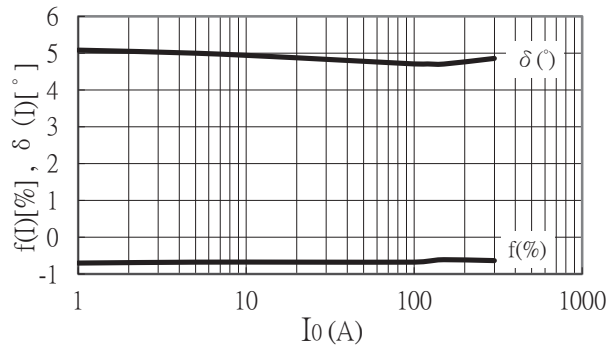
40A CT102250CP01



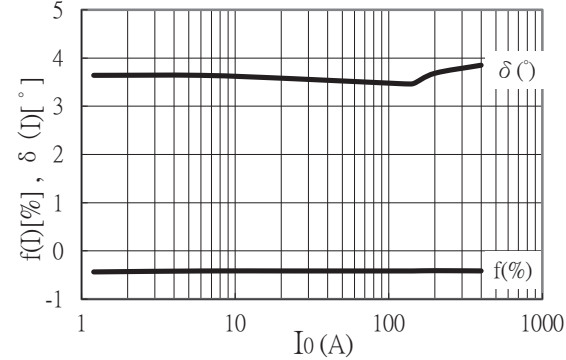
60A CT105250CP01



100A CT103250CP01



120A CT103250CL04



  
E318452

  
RoHS COMPLIANT